



EXCELLENCE • LEARNING • LEADERSHIP

ST JOHN'S
SCHOOL

Sixth Form Prospectus

September 2019-July 2020



We are a unique community where learning and leadership ensures excellence for all

St John's School, is a MOD School, part of MOD Directorate Children and Young People



EXCELLENCE • LEARNING • LEADERSHIP
ST JOHN'S & KING RICHARD
SCHOOLS FEDERATION

Principal's Welcome



EXCELLENCE • LEARNING • LEADERSHIP

Dear Parents,

Welcome to St John's School. We are a caring, friendly and ambitious 11-18 comprehensive school serving the military communities of the Western Sovereign Base Area, Cyprus.

Whether a student is with us for all of their secondary education or a shorter period we will work really hard to support them in their learning and progress as well as helping them to grow into well rounded respectful young people.

We have some fantastic resources:-

- Highly qualified, UK trained specialist staff with very low pupil: teacher ratios
- Excellent teaching and learning resources, including enviable ICT facilities and support
- Wide ranging, quality curricular and extra curricular range of provision

Key to our students' success is a personalised approach to individual students and a positive and productive relationship between home and school. Together we can make an immense difference to our children's futures. The Senior leadership team, Sixth Form team and subject teachers are all on hand to support students. We make huge efforts to provide our post 16 students with a wide variety of career advice and enrichment opportunities. The Sixth Form at St John's is very much a stepping stone into Further Education or Apprenticeships, this is contrary to the national trend where typically only 40% of forces children move to further education.

Our Core Values of 'Excellence, Learning and Leadership' underpin all that we do and we aim to ensure that learning is outstanding in every lesson, every day. We strongly believe that every learner has a key role to play in their own success and as such we expect our students to work to their maximum potential in a respectful and responsible manner.

I look forward to meeting you in the future and if I or any of the staff can help please phone on (00-357-2596) 3888 or email on enquiries@stjohnsschoolcyprus.com

Yours sincerely,
Alex Kerr
Acting Principal,
email: Principal@stjohnsschoolcyprus.com

Head of Sixth Form Welcome



EXCELLENCE • LEARNING • LEADERSHIP

Dear student,

Welcome to the exciting range of subjects and learning opportunities that await you if you make the decision to join us at St John's Sixth Form. You are about to enter a very exciting stage in your education and we are sure you will find this a useful guide to help you make the right decision. Young people who join our Sixth Form benefit from the advantages that come from being part of a small and successful Sixth Form. There are many opportunities to develop your leadership, to volunteer and to enhance your employability. We endeavour to ensure our students have the skills to be life long learners and to seek out every opportunity to make a positive contribution to society.

After reading this information you have any further questions please do not hesitate to contact me on (00-357-2596) 2328 or email on bcurran@stjohnsschoolcyprus.com





St John's School offers:

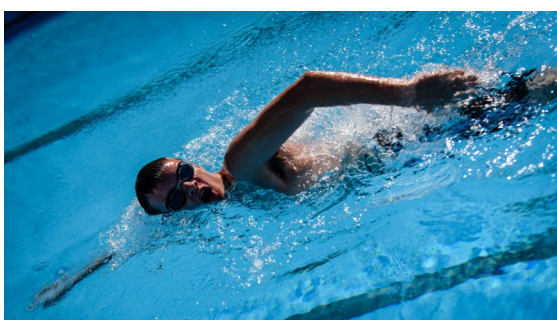
- A range of A2 courses
- A limited range of vocational courses
- A regular review of progress involving teachers, students and parents
- A supportive tutorial system for each student
- Careers Advice and Guidance
- Access to a dedicated Sixth Form study room area
- Fantastic computer and internet facilities
- The Duke of Edinburgh Award Scheme
- Opportunities in Music, Drama and Sport
- Leadership and responsibility opportunities within the school environment, including Head of House and Deputy Head of House.
- Involvement with the Model United Nations (debating)
- A UK-based Careers week to explore future study and employment opportunities (Design Your Future, p.11).
- A wide and varied Post-16 experience for all students



Broaden your Horizons

Alongside your academic courses we will try to offer you the opportunity to broaden your horizons through a range of additional activities. We have an extensive enrichment programme giving you the opportunity to develop new skills and interests. During the school day and after school, courses will be available for you to opt into. Once you have opted for a course you will be expected to show commitment and attend every session. We currently offer a range of courses and are open to suggestions for new courses that can enrich your experience at St Johns'.

- School Magazine
- L3 Extended Project Qualification
- Model United Nations (debating)
- Level 3 Sports Leader
- Sports teams
- Fitness training
- Peer mentoring
- Academic mentoring
- Survival Cookery
- Charity work
- Drama productions
- School Band
- Learn a new musical instrument
- Opportunities for work related learning
- Future Learn courses



What is on offer?



EXCELLENCE • LEARNING • LEADERSHIP

A Level reforms

In 2017 the Department for Education and the exams regulator Ofqual changed A Levels. We summarise the main changes here.

The key changes to A Level:

- **A Levels will be fully linear**, with students sitting their exams at the end of the two-year course.
- **AS Levels will be stand-alone qualifications** and will no longer contribute to an A Level grade. Most subjects will only be available as an A Level at St John's.

Those subjects identified as **Gateway subjects** are:

- Mathematics and Further Mathematics
- English Literature
- Physics
- Biology
- Chemistry
- Geography
- History
- Languages (Classical and Modern)

A Level courses

We offer a variety of Advanced (Level 3) courses and you can read about them in a lot more detail later in this prospectus. You must make sure you have the grade requirements before deciding if this path is for you.

Vocational courses

We offer a limited range of Advanced (Level 3) Vocational courses. Again your GCSE grades will help to decide if these courses are for you. The exact detail and content of these courses can also be found later in this prospectus.

Unifrog

Unifrog is an online platform used by over a 1,000 schools worldwide. Students can explore possible training and education pathways, record their achievements and create a professional C.V. Tutors use this to manage the progression process effectively and ensure students are well informed when making career decisions. In addition they are encouraged to ensure they have the opportunities and evidence of developing the softer skills trainers, employers and universities are looking for.



What is on offer?



EXCELLENCE • LEARNING • LEADERSHIP

What courses should you take?

This will depend upon your actual GCSE results and you will have been guided to a particular pathway during meetings. A minimum of five Grade 5's at GCSE level, usually to include English and Mathematics, is the minimum entry requirement to commence A Level studies. Choosing the correct course is an important decision and one you should make very carefully. You should seek guidance and listen to all the advice you are given. Please ensure you refer to the specific course entry requirements.

Pathway 1 - 4 Level 3 courses (Predicted Grade 7 or above in all subjects)

Pathway 2 - 3 Level 3 courses (Predicted Grade 5 in a minimum of 5 subjects)

Pathway 3 - Level 3 vocational courses or Level 2 NVS (Predicted Grade 4/5 in a minimum of 5 subjects)

Pathway 4 - Level 2 NVQ in Business Administration or Customer Service or possibly Level 2 Cache Early Years (1 day in school and 4 days on placement)

Your age on entry to St John's School will also determine which courses are available to you. If you are 16 and have just completed GCSEs we can offer 2 year courses, but if you are already 17 or 18 we may only be able to offer a one year course.

In addition, we are able to offer GCSE resit English and Maths, and Functional Skills English and Maths for NVQ students.

Please do not hesitate to contact the Sixth Form Office on ex 2328 if you have any queries or would like to discuss studying at St John's Sixth Form.

In Year 12 all students will work towards a Future Learn qualification and in Year 13 they will work towards the Extended Project Qualification. Both courses not only broaden our students experience but they contribute towards them becoming independent learners.

Core PE & SMSC

To ensure we offer a curriculum that considers the well being of our students they will participate in both core PE and SMSC on a weekly basis as part of their studies. They will have options within both programmes and the lessons are tailored to suit the needs of the group.

Can I chose any subject?

The answer, unfortunately is 'no', only **ONE** subject can be chosen from any of the blocks.

To see the blocks currently available please visit the school website: www.stjohnsschoolcyprus.com



Our Expectations



EXCELLENCE • LEARNING • LEADERSHIP

Head of House

Each year we appoint students from Year 12 as Student Head and Deputy Head of House. The application process is competitive and rigorous but the rewards for the successful candidates are numerous. It is an exciting opportunity to take on a senior leadership role in the school and be pivotal in leading their houses forward. This includes being a role model, organising house competitions, running assemblies, motivating others and leading the House Captains from Year 7 – 11.

"The Head of House position has helped me with my confidence, organisation skills and leadership skills. At first I was worried of doing assemblies and speaking to the house captains but after doing it a few times, I stopped worrying and got on with it. I have become much better at prioritising tasks and meeting deadlines, which will help me with my university and anything after that." Ushan Dissanakaya, Apollo 2018

"The position of Head of House has given me a unique opportunity and genuinely helped me develop as a person. The way I have learnt to present and speak with confidence in front of the school during assemblies was a skill I thought I would never be able to do. The level of responsibility given to us has prepared me for university and the workplace as well as helping me feel closer to the St. John's community that has been my home for 5 years. In particular I appreciate having a closer connection to the lower years. Overall I believe I am a much more confident, skilled and motivated student due to this experience." Rosie Favis, Poseidon 2018

We expect all students to follow our Core Values:



Study Expectations for success

Studying in the Sixth Form is different to Years 10 and 11. You will be expected to take a lot more responsibility for your own learning. The demands of Level 3 courses are great. It is vital therefore that you are committed to your courses and prepared to meet our expectations.

You will be studying fewer subjects in smaller groups with study periods when you will be expected to do further work. This will be done in the Sixth Form Study Room. For **every** hour of contact time in lessons you will be expected to do a **minimum** one hour of private study, either at home or in school. This study must be planned and we expect it to equate to a working week of 40 hours. There will always be work for you to do and it is important that you are organised and hard working. This should be your target when you start in September.

You can never say....."I have no work to do".....



Study Facilities

There is a dedicated Sixth Form room to use for private study during your non-contact time. Your non-contact time will be used as “study periods”. During these periods you will go to the Sixth Form Study Room, which was refurbished in 2016, for private study. This is a supervised study area where you can seek support in your chosen subjects. It is air conditioned with full internet and school network facilities.

The Learning and Resource Centre is another area you can use for private study in Year 13. The Resource Centre is open throughout the school day and you can use it during some of your non-contact time and other rooms for quieter study.

You can borrow books and Kindles as well as use reference books. Current newspapers and magazines are also available. It is also air conditioned with full internet and school network provision.



Student Comment:

"The school allows Sixth Form students freedom to study during non-contact time. Facilities for studying are excellent."



Life in the Sixth Form



EXCELLENCE • LEARNING • LEADERSHIP

iPad 1 to 1 Program

At St John's School we are committed to keeping up to date with modern trends and development in education. Our school has campus-wide broadband Wi-Fi and all our full-time Sixth Form students receive their own iPad to enhance their learning and to ensure all online resources are accessible. These devices are given on loan for the duration of their studies and are issued at the start of the academic year.



The Common Room



At break times you will have the opportunity to relax in our Sixth Form Common Room. Designed by students, it has comfortable seating and kitchen facilities that will allow you to enjoy chatting with fellow students in a welcoming and friendly environment. We hope that you, along with your fellow students, will both enjoy and take pride in it.

Student Comment:
"There is a good atmosphere within the common room."

The School Snack Shack

Our school day may be very different to what you have been used to. Our day starts at 8.00am and finishes at 2.00pm. We have two break times during which the Snack Shop is open for the whole school to buy food. As a Sixth Form student you are expected to take on roles of responsibility, one is to serve at the Snack Shop during some break times.



Life in the Sixth Form



EXCELLENCE • LEARNING • LEADERSHIP

Sixth Form Tutor Representatives

Bi-weekly meetings are held with the Head of Sixth Form to discuss charity events, social meeting and developments within the Sixth Form. The viewpoints of the Sixth Form are represented in an open and friendly forum.

Sixth Form Social events

We are extremely proud of our social calendar which is organised by our students for our students. It aims to encourage all our students to feel part of the Sixth Form community. Activities have included The Escape Rooms, a Christmas meal and a night of bowling and a formal end of year meal. We look forward to new ideas and continuing to have an event chosen by the students every half term.



Dress Code

Students in our Sixth Form have chosen to continue their study with us and therefore, by default, agree to our Sixth Form Dress expectations. If students do not adhere to these expectations, they will be asked to return home to change, or parents will be asked to bring in a change of clothes.

The overall guiding principle is: dress and appearance should be appropriate for a work/business environment.

Attendance

Research shows that attendance is crucial if students are to be successful post-16 and because of this the Head of Sixth Form closely monitors attendance. You will therefore be expected to maintain an attendance rate in excess of 95%, unless there is a very good reason. We assume you are part of the Sixth Form to achieve excellence in learning. There is clear evidence that once attendance drops below 90% students achieve a grade below their target.



Missed work

If the absence is known or the student is able to work they must contact their subject teachers and the Head of Sixth Form to request work. If the absence was unexpected or due to illness the student must, on their return, contact or see the relevant teachers to collect work and catch up as soon as possible.



Career Guidance

St John's School is proud of its comprehensive individualised Careers Programme for Sixth Form students. The school based Careers Adviser is an integral part of the school's Sixth Form and helps enable students to develop the knowledge and skills they need to make successful choices and manage transition. The aim is to ensure all students achieve their full potential in whatever future career they choose to follow.

It is recognised that individualised guidance needs to be available at specific times. To this end, every Sixth Form student will be supported by individual careers interviews and education throughout their A Level studies as they move towards making decisions about university, Gap Year options or Apprenticeships. An initial interview, in conjunction with the Head of Sixth Form following GCSE results, ensures students and parents have an opportunity to fully explore the range of study options open to them. During the Autumn Term the Morrisby Psychometric Careers Profile is offered and funded for those Year 12 students who are new to the school. One to One interviews commence in the Spring Term with follow-up appointments as required. Parents are invited and encouraged to attend these interviews whenever possible.

During the Easter Term the school offers a week-long trip to Manchester called 'Designing your Future'. Students are taken to a variety of universities, job and employment fairs, and introduced to a wide variety of Apprenticeship schemes and opportunities (see over).

In the summer term of Year 12 the students are supported with their UCAS applications, advised on course choices, personal statements and finance. Help finding relevant work experience can sometimes be arranged to strengthen a university application. In addition to these activities and whenever possible, alumni are invited into school to talk to students about their jobs, careers and university courses to help give Sixth Form students a real life perspective.

The careers library is well stocked and up-to date. It includes a wide range of resources covering Apprenticeships, CV writing and interview skills, Further and Higher Education colleges and Gap Year options.

The Careers Adviser and Head of Sixth Form are available on Results Day to ensure students receive all the help and support they need to secure their university places.

Will you be applying to University?

You may not be sure if this is the route for you but it is worth considering as your subject choices can influence the university and the course available to you.

The Russell Group universities have now published guidance on the subjects choose at A Level in a document named 'Informed Choices' (www.russellgroup.ac.uk). They identify the facilitating subjects, which they argue provide a student with more options especially if you wish to study at a Russell Group university.

In addition, the Extended Project Qualification (EPQ), offered at the end of Year 12, is also highly regarded, with many universities providing a lower offer to students who achieve a good grade in this course.

Remember, many subjects and courses may require specific subjects at A Level too, including Medicine, Music and Art so ensure your subject choices are the right ones for you and your future.



Design Your Future

As part of the Year 12 programme we visit the HE Convention in Nicosia in the Autumn term to provide a first opportunity to consider Higher Education. Universities present information about course selection, students finance and how to compare universities.

In the Spring term, students are offered the opportunity to consider their futures post Sixth Form. This involves staying in Manchester City Centre with a timetable of valuable activities including attendance at a HE fair with most UK universities represented, a range of university visits to meet students and view facilities, talks about a successful GAP year and careers in the military, along with industry based visits to learn about careers and higher level apprenticeships.

In addition to the career focused element of the visit, life skills are developed as students live on a budget, plan and use public transport and explore the differences of living independently in the UK.



Student Comment:

I was fortunate enough to participate in the Mediterranean Model United Nations conference in Nicosia. This was an amazing experience and has given me a really great example of my leaderships skills to use on my UCAS application.

Tutor System

When you enter the Sixth Form as a full time student you will be placed in a tutor group with other Year 12 students. Your tutor is your first point of contact should you have any issues you wish to discuss. You will have a tutor period of fifteen minutes at the start of the day, three mornings a week. As well as mentoring individual students during this time, your tutor will also develop discussions on particular personal, social and moral issues with the group as a whole and you will follow a structured tutor programme. With this regular contact it is anticipated that you will develop a positive relationship with your tutor.





As a parent, what communication should you expect from school?

- Your son/daughter will have an initial settling in period to both Year 12 and 13. Before the October half-term you will receive a settling in review where teachers comment on how well he/she is coping with their courses. Part of this review will also inform you of some important predictive data. This review will be then used as a basis for a meeting with your son/daughter's form tutor where you can discuss any issues arising.
- For students who may be struggling in certain areas, there maybe a further review period. At the end of this period and if little progress has been seen, you may be invited to come into school to discuss possible options.
- The school operates a "Tracking System" within the Sixth Form where students are assessed against predicted data. This is done to monitor progress. You will receive information every term showing the current progress your son/daughter is making compared to this predicted data. Where students appear to be underperforming, intervention strategies will be put in place to support them with their learning and progress. You will be asked to be part of this process.
- In February you will receive a mid year report, which will provide the basis of discussion at a Parents' Consultation Afternoon.
- An end of year report following year 12 Exams.

The school website www.stjohnsschoolcyprus.com, Twitter feed [@SJSCyprus](https://twitter.com/SJSCyprus) and Facebook Page [St John's School, Cyprus](https://www.facebook.com/StJohnsSchoolCyprus) are all current and will provide you with information on a regular basis.

Target Setting

All Students are tested at the start of Year 12 using the CEM centre ALIS test <http://www.cem.org/post-16>. This is a predictive test and helps us to set challenging targets for all of our Sixth Form students.

St John's operates a system of regular assessment where students can discuss their progress with their teacher, tutor, learning mentor or the Head of Sixth Form. From these discussions students can:

- Set short term personal targets
- Discuss and agree upon challenging yet achievable target grades
- Compare their progress with predicted data
- Respond to feedback by improving their work or their approach to learning
- Personalise their timetable in response to subject pressures at different times



POST 16

How likely are students to achieve particular subject grades as they set out on the journey to post-16 qualifications? And as the school/college itself seeks to improve performance, how can it evaluate the effect of any new approach?

Alis has the answers. The Advanced Level Information System (Alis) gives teachers the reliable data they need to predict exam outcomes student by student, subject by subject.

For colleges, Alis offers analysis for a range of vocational qualifications.

For schools following an IB curriculum, the CEM IBE service offers analysis of IB diploma qualifications.

[Download our Brochure](#) for more information on our Post 16 assessments.



UCAS points for University Entrance

GCE

Grade	A level	EPQ	AS
A*	56	28	N/A
A	48	24	20
B	40	20	16
C	32	16	12
D	24	12	10
E	16	8	6

Other qualifications

Subsidiary Sport and Travel & Tourism Cambridge Technicals ICT		Certificate in Health and Social Care	
D*	56	D*	28
D	48	D	24
M	32	M	16
P	16	P	8

- Not all qualifications attract UCAS Tariff points for various reasons.** The university or college you're interested in may accept your qualifications as an appropriate entry route even if they don't attract UCAS Tariff points.
- Not all universities and colleges use the UCAS Tariff.** Most prefer to express their entry requirements and make offers in terms of qualifications and grades rather than in Tariff points. Around one third of course entry requirements make reference to the Tariff.
- Tariff points are generally only counted for the highest level of achievement in a subject.** This means that you can't count AS levels if you have the full A level in the same subject.

Options: Subject Index



EXCELLENCE • LEARNING • LEADERSHIP

<u>Subject</u>	<u>Page</u>
Applied Business	<u>15</u>
Art	<u>16</u>
Biology	<u>17</u>
Chemistry	<u>18</u>
English Literature	<u>19</u>
Film Studies	<u>20</u>
French/German	<u>21</u>
Geography	<u>22</u>
BTEC Health and Social Care	<u>23</u>
History	<u>24</u>
ICT (Cambridge Technicals)	<u>25</u>
Mathematics	<u>26</u>
National Vocational Qualification (NVQ)	<u>27</u>
Physics	<u>28</u>
Product Design	<u>29</u>
Psychology	<u>30</u>
Religious Studies	<u>31</u>
BTEC Sport	<u>32</u>
Travel & Tourism	<u>33</u>





Who should consider studying this course?

This course is aimed at students who wish to progress to HE and/or pursue a career in Business or Business-related subjects eg management, finance, entrepreneurship. Students who wish learning to be practical and active and have 4 GCSEs at 5 or above including English and Mathematics.

What units are studied and how are they assessed?

Level 3 Certificate in Applied Business

Unit 1 - Financial Planning and Analysis

Students will investigate how finance can help plan an enterprise, monitor its progress and analyse financial decisions.

External examination

Unit 2 - Business Dynamics

Students will develop an understanding of business organisations and how they can use their human, physical and financial resources to achieve their goals.

Internal assessment

Unit 3 - Entrepreneurial Opportunities

Students will investigate personal enterprises and risks involved.

External examination

Level 3 Extended Certificate in Applied Business

Unit 4 - Managing and leading people

Students will investigate how managers can organise, motivate and lead employees through organisational change to achieve business objectives.

External examination

Unit 5 - Developing a business proposal

Students will develop, present and evaluate a business proposal.

Internal assessment

Plus one other Optional Unit



"Business opens up a lot of opportunities and allows you to meet varied and interesting people who can help you understand the business world in general."

Jodie-Leigh Hudson

Frequently asked questions and future careers

I am not sure what I want to do, why should I study this subject? Students will investigate business ventures (large and small) and the relationships between people, marketing, finance and operations. Students will gain transferable skills, useful for future studies and career prospects.

How much work will I need to do? Due to the internal assessment (coursework) units within this course (50% of Extended Certificate), students will be expected to work independently on research and analysis of data.

What careers could it lead to? Applied Business can help a student enter many degree/career options and can also be combined with a specialist subject for joint degree applications. Popular destinations are: Business Management, Law, Economics and both European and International Business opportunities.

For more information contact Mrs M Schapendonk
Email: mschapendonk@stjohnsschoolcyprus.com



Who should consider studying this course?

Ideally you would have successfully studied Art at GCSE achieving a good grade and have a passion and interest for the visual and creative arts. You also need to be willing to invest the time and effort to produce creative work and have maintained an up to date sketchbook and a portfolio.

What units are studied and how are they assessed?

A Level Art

The course is made up of two components:

The Personal study which involves a practical investigation, into an idea, issue, concept or theme, supported by written material and a 3000 word essay. The focus of the investigation must be identified independently by the student and must lead to a finished body of work that demonstrates a depth of study and investigation of different media and techniques.

The Externally Set Assignment which culminates in a 15hr exam. Students are given an exam paper early February and have to select a question or starting point. Preparatory work is presented in any suitable format, such as mounted sheets, design sheets, sketchbooks, workbooks, journals, models and maquettes. The exam is usually sat around late April.



Frequently asked questions and future careers

I am not sure what I want to do, why should I study this subject? If you are interested in the Visual Arts and possibly considering a future career or arts related college/ university course.

Why do I need this A level? It will allow you to explore new media and techniques and broaden your understanding and appreciation of Art, while building a strong portfolio of work.

What should I do next? It is really important that you discuss your interest in the subject, with Mr Bougeard. Arrange a time to meet and remember to bring along sketchbooks and any portfolio work you have.

"A level Art allowed me to be creative and imaginative, to think in more than one way, to be expressive....."

"I really enjoyed Art and did not want to choose purely academic subjects, however it was a lot of work and extremely demanding."

For more information contact Mr Bougeard
Email pbougeard@stjohnsschoolcyprus.com



Who should consider studying this course?

You should have ideally obtained at least a grade **6-6 in Combined Science** or a grade **6 in both Biology and Chemistry at GCSE**. Grade **6** in Maths is also an advantage to successfully study Biology at A level. You should have a lively and enquiring mind and an **interest in the all aspects of Biology and Biochemistry**. An enjoyment of practical and independent work will also be an advantage.

What units are studied and how are they assessed?

A level Biology

The course content is divided into 8 topics studied in a context led approach.

Year 1: Lifestyle, Health and Risk
Genes and Health
Voice of the Genome
Biodiversity and Natural resources

Year 2: On the Wild Side
Immunity, Infection & Forensics
Run for Your Life
Grey Matter



Assessment

There are three exams at the end of the two year A Level, all of which are two hours long (each worth 33.3% of the total marks). Some questions on each paper are based on the 18 Core Practical experiments completed throughout the course, which also lead to the "Practical Competency Award".

Student Comment:

"Biology is an exciting subject that highlights lots of controversial topics." **Jodie**

"There are lots of practicals that enhance your understanding."
Jessica



Frequently asked questions and future careers

Do we do practical work?

Practical work is a key part of the course, and will count towards your "Practical Competency Award".

Is there any coursework?

No. All the assessment for the course is in the end of course exams.

Future careers

For career paths open to a Biologist visit:

www.societyofbiology.org

For more information contact Ms Ellis

Email: sellis@stjohnsschoolcyprus.com



Who should consider studying this course?

People who enjoy Chemistry at GCSE. You should have ideally achieved at least a grade 6 in triple Science or equivalent. If not then a grade 6 in Combined Science. If you enjoy doing practical experiments that will be a distinct advantage.

What units are studied and how are they assessed?

Physical Chemistry

In the first year we study the mole, amount of substance, energetics, kinetics, chemical equilibria and Le Chatelier's principle and redox equations. In the second year we study thermodynamics, rate equations, the equilibrium constant, electrochemistry and acids and bases.

Organic Chemistry

In the first year we study basic Organic Chemistry, the alkanes, halogenoalkanes, alkenes, alcohols and organic analysis. In the second year we go on to study optical isomerism, aldehydes and ketones and carboxylic acids and their derivatives.

Inorganic Chemistry

In the first year we study periodicity, the alkaline earth metals and the halogens. In the second year we study period 3 elements and their oxides, the transition metals and ions in aqueous solution.

Assessment

There are three exams at the end of the two years for A Level, all of which are two hours long. At least 15% of the exams for A-level Chemistry are based on 12 Core Practical experiments done throughout the course. The AS has two exams at the end of the year. Both are 1 hour 30 minutes long. There will also be approximately 20% calculations and numeracy content.



Student Comments:

"Chemistry is a difficult A Level but the topics are interesting." **Lauryn Dunn**

"Chemistry is extremely challenging but helps extend the knowledge gained from GCSE." **Owen Larwood**



Frequently asked questions and future careers

What grades do I need at GCSE? Ideally a 6 in triple Sciences and a 6 or above in Mathematics would be advantageous.

I am not sure what I want to do, why should I study Chemistry? Chemistry is one of the most respected A levels and develops essential skills like logical analytical thinking, practical skills, report writing, numeracy and literacy and many more.

Do I need a Chemistry A level? Potential careers include analytical chemist, chemical engineer, Doctor, Nurse, Forensic Scientist, Vet etc. More details can be found at <http://www.futuremorph.org/14-16/next-steps/follow-your-favourite-subject/careers-from-chemistry/do-i-need-chemistry-to/>.

For more information contact Mr Glencross
Email: aglencross@stjohnsschoolcyprus.com



Who should consider studying this course?

Any student with a genuine love of literature who enjoys the in-depth analysis of literary texts. It is ideally suited to students achieving a grade 5 or above at GCSE.

What units are studied and how are they assessed?

Component 1: Drama Paper code: 9ET0/01

Students study:

- One Shakespeare play
 - One other drama from the categories of tragedy or comedy.
- (30% of the total qualification)**

Component 2: Prose Paper code: 9ET0/02

Students study: two prose texts from a chosen theme, including at least one pre 1900 text.

(20% of the total qualification)

Component 3: Poetry Paper code: 9ET0/03

Students study: a selection of poetry from a post-2000 collection AND either

- a range of poetry from a literary period or
- a range of poetry by a named poet from within a literary period.

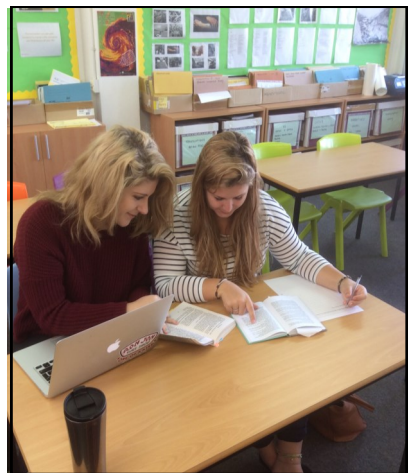
(30% of the total qualification)

Component 4: Coursework Paper Code: 9ET0/04

Students study: a free choice of two texts linked by theme, movement, author or period. The chosen texts may be selected from poetry, drama, prose or literary non-fiction.

(20% of the total qualification)

Coursework: One extended comparative essay referring to two texts 2500-3000 words 60 marks.



Student Comment:

"English has really challenged me and pushed me out of my comfort zone at many points. However, the knowledge and experience I have gained from the subject is rewarding and will benefit me greatly at university" **Charlotte**

Frequently asked questions and future careers

How long is the A Level Course?

The A level is a two year course.

Is the A level a separate qualification?

Yes. A level English Literature is a stand-alone qualification.

How is the A level course assessed ?

The course is assessed by a combination of open book examinations and a single coursework element.

What will the course involve?

The course will involve the detailed analytical study of the primary texts (prose, poetry and drama) and the use of a range of secondary critical texts to support and strengthen students' own original interpretations. Students will be required to participate in group discussion, give individual presentations and engage in extensive independent research. The willingness to challenge their own views and those of others is an essential skill.

Future Careers?

The study of A Level English Literature provides a good grounding which prepares students for a range of careers: journalism, publishing, editorial work, and broadcasting.

For more information contact Dr Kelly

Email: dkelly@stjohnsschoolcyprus.com



Who should consider studying this course?

Students should ideally have at least a Grade 4 at GCSE English as the course has a strong written focus. If you have a general interest in films and enjoy finding out about film making then this course will contain something for you.

What units are studied and how are they assessed?

Component 1: Varieties of film and Filmmaking

Written exam 2½ hours

35%

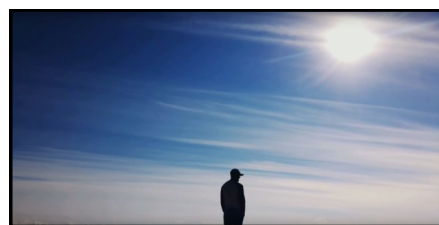
This unit will comprise of six feature length films, two from each of the following topics: Hollywood 1930-1990; American film since 2005 and British film since 1995. This year we will be studying; *Some Like it Hot*, *One Flew Over the Cuckoo's Nest*, *Sightseers*, *Shaun of the Dead*, *Selma* and *Captain Fantastic*.

Component 2: Global Filmmaking Perspectives

Written Exam 2½ hours

35%

This unit will comprise of five feature length films, two 'global films' and one from each of the following topics: Documentary, Silent, Experimental. This year we will be studying; *Pan's Labyrinth*, *City of God*, *Sisters in Law*, *Short films by Buster Keaton* and *Pulp Fiction*.



Component 3: Production

In this unit students will have the opportunity to create their own short film or screenplay.



Student Comments:

"Film Studies has shaped my whole life and as a result of this course I have chosen to study this at university."

Ellie Winston

"The experience of making a film (especially a zombie film) was amazing. I have really learnt a lot."

Frans Schapendonk

Frequently asked questions and future careers

Why should I choose to study Film Studies?

Film Studies provides students with an opportunity to explore aspects of film they may not have considered before.

How much work will I need to do?

The course requires a lot of personal study; in the exam, students are required to display a broad knowledge of the topics they have studied. Therefore their success depends on the depth of their research. The film project also requires good time management as this will often be completed outside of lesson time.

What career can it lead to?

Many Film Studies students have gone on to study Film, Journalism or Literature based courses at university. The breadth, depth and diversity of A Level Film Studies will prepare students for a wide range of Higher Education courses, including a growing number of specialist degrees in film itself and will be of value to those seeking employment within the television and film industries, publishing, advertising or other areas of media.

For more information contact Miss Stonier
Email: hstonier@stjohnsschoolcyprus.com



Who should consider studying this course?

This course is most suitable for those who have achieved at least a Grade 6 or above in GCSE French or German.

What units are studied and how are they assessed?

A-Level Topics include:

- Nature and Environment
- Immigration and Integration
- The reunification of Germany
- Education and Employment
- Music
- Media and Technology
- Customs and Traditions
- Grammar
- Literary texts and films (1 novel, 1 film)

Assessment:

At the end of Year 13 students will do the following exams;

- Paper 1: Listening, Reading and Translation Exam (2 hrs), 40% of A-Level.
- Paper 2: Writing Exam (2 hrs 40 mins), 30% of A-Level.



Student Comment:

"A-level languages are very interesting because they allow you to develop your knowledge of the language in much more depth than at GCSE and they also help to increase your cultural awareness. My favourite topic so far has been music." Year 12 student.

Frequently asked questions and future careers

What are the aims of the course?

To develop students' enthusiasm for language learning, promote cultural awareness and produce effective communicators in the target language.

What are the benefits of learning a foreign language?

Not only will language skills increase your enjoyment of holidays abroad, you will improve your employability. There are a wide range of career opportunities for those who have studied languages.

For example?

Translating	Interpreting
Armed Forces	Teaching
Retail and Wholesale	Journalism
Health & Social Work	Hotels & Restaurants
Engineering	Travel and Tourism

In fact, practically *any* profession could involve languages!

For more information contact Mr J Gleed
Email: jgleed@stjohnsschoolcyprus.com



Who should consider studying this course?

It is recommended, that you have obtained at least a Grade 5 at GCSE level to study Geography at A Level. You should have an independent, lively and enquiring mind, an interest in the environment and current affairs, a willingness to explore new ideas and an ability to communicate your ideas.

What units are studied and how are they assessed?

Unit 1: Physical Systems

1 hour 45 minute exam (24%)

Landscape systems - Coastal, Glacial or Dry (2 of 3)

Earth Life Support Systems - Water and Carbon cycles

Geographical Skills

Unit 2: Human interactions

1 hour 45 minute exam (24%)

Changing Spaces; Making Places - From local to global scales

Global Connections - Trade **or** Migration and Human Rights **or** Power and Borders

Geographical Skills

Unit 3: Geographical Debates

2½ hour exam (32%)

Study 2 of 5

Climate Change, Disease Dilemmas, Exploring Oceans, Future of Food and Hazardous Earth.

Unit 4: Geographical Independent Investigation

3,000-4,000 word report (20%)



Student Comment:

"Geography has inspired me to continue my studies to Higher Education and introduced me to topics that influenced my future career direction." **Callie (studying Geography at Cardiff University)**

"I have enjoyed applying my geography knowledge to appreciate the impact of conflict." **Megan (studying International Relations at Leeds University)**

Frequently asked questions and future careers

How much work will I need to do?

Regular homework will be set including report writing, reading and research. In addition as an independent learner it is expected that you will keep up to date with current affairs.

Do we do fieldwork?

Year 13 includes a residential to Wales in addition to day visits. 4 days worth of field experience are now a compulsory element of the course.

Where do all the Geographers' go?

Geography graduates were surveyed after their degree courses about their career destinations. The results show:

- 40.6% went into management & administration
- 24.8% did further training, including PGCE
- 11.4% joined the financial sector
- 10.4% joined the retail sector
- 10% joined other professions, including the media.

For more information contact Mr Vasconcellos

Email: rasconcellos@stjohnsschoolcyprus.com

BTEC National Single Certificate in Health and Social Care - Level 3



EXCELLENCE • LEARNING • LEADERSHIP

Who should consider studying this course?

This course is aimed at students who are interested in learning about the health and social care sector as part of a balanced study programme. It is equivalent to an AS level and supports access to a range of higher education courses when taken alongside further level 3 qualifications. No prior study of the sector is needed, but students should have a good range of GCSEs or equivalent.

What units are studied and how are they assessed?

BTEC National Certificate in Health and Social Care - Level 3

Unit 1 - Human Lifespan Development

External examination

- Human growth and development through the life stages (physical, intellectual, emotional and social)
- Factors affecting human growth and development
- Effects of ageing

Unit 5 - Meeting Individual Care and Support Needs

Internal assessment

Learners focus on the principles and practicalities that underpin the foundations of all care disciplines

- Examine principles, values and skills which underpin meeting the care and support needs of individuals
- Examine the ethical issues involved when providing care and support to meet individual needs
- Investigate the principles behind enabling individuals with care and support needs to overcome challenges
- Investigate the roles of professionals and how they work together to provide the care and support necessary to meet individual needs



Frequently asked questions and future careers

I am not sure what I want to do, why should I study this subject? Students will be introduced to the foundations and principles of health care and social care. Students can progress into work through degree programmes in nursing, midwifery, social work, physiotherapy, occupational therapy and pharmacy - over 300 career paths available.

Will the qualification progress to further learning? Successful students may have the opportunity to progress to the National Extended Certificate in Health and Social Care - equivalent to a full A level.

What careers could it lead to? This qualification is designed primarily to support progression to employment via higher education. It also supports students choosing to progress directly to employment, as the transferable knowledge, understanding and skills will give successful students an advantage when applying for a range of entry level roles.

For more information contact Mrs M Schapendonk
Email: mschapendonk@stjohnsschoolcyprus.com



Who should consider studying this course?

Any student who is interested in the past, has enjoyed History at GCSE gaining ideally a Grade 6 or above.

What units are studied and how are they assessed?

Unit 1 The early Stuarts, the origins of the Civil War, the execution of Charles I and the interregnum. This unit involves studying a period of dramatic change in our nation's history; that saw the genesis of the Parliamentary system of government that we see today. **25% of final grade.**

Unit 2 The Cold War in Europe 1941 to 1995. This unit involves the study of the period of history that forms the basis of much of the modern world today. **15% of final grade.**

Unit 3 Russia and its Rulers 1855 to 1964. This unit involves the study of the creation of the world's first Communist state and the building of the Soviet superpower. **40% of final grade.**

Unit 4 Coursework component 3000 words. A free choice to research and explain an area of history that fascinates you. **20% of final grade.**



Student Comment:

"I have greatly enjoyed my History A level and found the support from the staff excellent." **Jack Tickle**

Frequently asked questions and future careers

So why should I take History A Level?

History A Level provides students the opportunity to extend their skills of research, analysis and evaluation, whilst studying the extremes of the human condition.

What subjects does it combine well with?

History A Level makes a good combination with the following subjects: - Business Studies, English, Geography, Psychology and RE. It also complements subjects involved in reasoning and proofs such as Mathematics.

What careers can it lead to?

There are many careers which follow on from a History A Level. Perhaps the best known are the law, journalism and banking.

For more information contact Mr Strang
Email: jstrang@stjohnsschoolcyprus.com



Who should consider studying this course?

In today's world ICT skills are just as essential as numeracy and literacy. ICT provides new opportunities for the world of work and mastering new technologies.

Although the course may be attempted without having followed an ICT GCSE course, you must have achieved 5 GCSE's, preferably with above a 5 in English, Maths and Science .

What units are studied and how are they assessed?

Year 12

Unit 1 - Communication and employability skills for IT

This is a mandatory coursework unit

Unit 2 - Information Systems

This is a mandatory coursework unit

Unit 3 - Computer Systems

This is an optional unit



Year 13

Students study 3 additional optional units from the 40 other units available in the qualification.

The units studied will depend on the pathway they choose.

All units are coursework based—marked at SJS and moderated by OCR.

Each unit carries the same weighting within the course and are all marked to a Pass, Merit or Distinction level:

Pass(E); Merit(C); Distinction(A).



Student Comments:

"ICT is a good subject to choose as it is all coursework based and you can choose most of the units based on what interests you."

Thomas Glencross

"You can see your marks as you progress which motivates you to try harder." **Khadija Begum**

Frequently asked questions and future careers

What other skills would be useful for this course?

As the course is coursework based, a good level of English is required (min grade 5 at GCSE). Overall ICT competency is essential.

How much coursework is involved?

The whole course is coursework based, there are no theory examinations to sit. The course is based on developing both business and practical ICT skills and knowledge.

What skills will I develop?

The modules/units allow students to develop a greater understanding of how organisations use information both internally and externally to run their business successfully and deal with customers.

You will also have to research and gather sources from real examples to explain the impact different technologies play in today's society and the effect on our lives.

For more information contact Mrs A Wolanski
Email: awolanski@stjohnsschoolcyprus.com



Who should consider studying this course?

Mathematics A level is highly regarded by universities and employers and it is a requirement for anybody wishing to go on to study Mathematics, Engineering and many Science courses at university. You should enjoy Mathematics in its own right.

The entry requirement you should ideally have to study Maths to A level is a Grade 7 at GCSE.

What units are studied and how are they assessed?

Year 12 and 13

All students will continue to work in Pure Mathematics and much of this work to begin with will be familiar from KS4 but they will also start to work on Mechanics and Statistics.

We also offer Further Mathematics to those students who would like to do a second A Level in Mathematics. The Further Mathematics A level continues to give the students a choice of applied modules so students can choose to extend their work in Mechanics or Statistics, but also have the chance to focus on Decision Maths if they wish.

Student Comment:

"I have really enjoyed the challenge of A level Mathematics. It can be a bit tricky at times and it is hard work, but it is very rewarding." **Ellie**

Frequently asked questions and Future careers

How much work will I need to do?

Homework is set regularly and it is essential to keep on top of this, as often work in the next lesson will build on what has been set for homework.



What students do after A level Mathematics?

A pass in A Level Mathematics is a qualification which is much in demand. Specifically it provides a sound basis for many degree courses, and there are wide opportunities in scientific careers and in financial positions. Many seemingly unrelated professions such as the legal profession value this qualification, as an indication of a candidate's power of logical thought.

Further Mathematics

At St John's School we offer the opportunity of doing a second A level in

Mathematics to those students who have achieved the highest grades at GCSE. This is particularly suitable for students who know that they want to study engineering or mathematics at university.

Student Comment:

"A level Mathematics is really fulfilling. It is hard, but that just makes it even more rewarding when you get things right. I like the difference between Maths and the subjects that require lots of essay writing." **Jasmine**

For more information contact Mr McKenzie
Email: imckenzie@stjohnsschoolcyprus.com



Who should consider studying this course?

Students without the requisite grades, or whose subject areas are not within the school Curriculum, will be offered the opportunity to enrol on one of 3 supported NVQ programmes: Business Administration; Customer Service; or Early Years Cache level 2 qualification.

What is the course structure?

The NVQ is founded on the principles of Work Based Learning (WBL). Students divide their time between work placements within the community and local businesses and the school. Learning is checked against competency frameworks and assessed through student log-books and portfolios.

Typically, students can expect to split their time on a 3 days placement:2 days school ratio. Monday and Thursday are designated school days, with Tuesday, Wednesday and Friday spent in placements.

Students not requiring re-sits in English and/or Mathematics will only be required to do 1 day school work.

What will I be doing during school time?

Time in school will predominantly be spent writing-up and completing Taskbook activities within student portfolios. However, NVQ students are integrated into the mainstream activities as far as possible, attending Sixth Form Physical Education Enrichment, SMSC lessons, and Tutor Groups.

Students requiring GCSE resits in English and/or Mathematics will also be provided with additional tuition and support. Exams are sat in November and March.

For those not seeking GCSE, the school can support Functional Skills qualifications in either English or Mathematics. Exams are sat in January and March.

Where are my placements?

Given our location, placements are limited to those within the SBA areas. In the last year, these have included employers across the range of sectors: public; private; charity.

Akrotiri Primary School
BARC
CESSAC
Sodexo
Thrifty shop
Episkopi Gym

Frequently asked questions and future careers

What careers can this lead to?

The foundation skills and competencies that these impart prepare students for employment across the public, private and charity sectors, in a range of roles from Receptionists to Office and Team Managers.

Are NVQs recognised in Higher and Lifelong Learning institutions?

Simple answer is 'Yes', but this depends on your future options and choices. With more Higher Apprenticeships being offered by UK universities and accrediting bodies, it is now much easier to progress and convert to higher awards.

For more information contact Mrs Curran
Email: bcurran@stjohnsschoolcyprus.com



Who should consider studying this course?

People who enjoy Physics at GCSE. You should have ideally achieved at least a grade 6 in triple Science or equivalent. If not then a Grade 6 in double award Science. If you enjoy doing practical experiments that will be a distinct advantage.

A level Physics teaches you about the physical world we live in and how things behave in our universe, from the tiniest fundamental particles to its creation. It is the fundamental science behind all the other sciences.

What units are studied and how are they assessed?

The course we offer at St John's aims to reflect Physics as it is practiced and used today. Physics is at the heart of everything and is a highly rewarding subject to study at A Level. Whilst physics is a very broad subject, this course succeeds in giving students a solid foundation for further studies.

First Year	Second Year
Particles, Quantum Phenomena and Electricity	Fields and Further Mechanics
Mechanics, Materials and Waves	Nuclear, Thermal Physics
	Astrophysics

There are three exams at the end of the two years for A-level, all of which are two hours long. At least 15% of the marks for A-level Physics are based on what you learn during practical work.



Student Comment:

"You learn so much via practical lessons and demonstrations. The work can be tough but getting a good result is always so rewarding. I'd recommend this to anyone who wonders how every thing works"

Darcie (Year 13 student)

Frequently asked questions and future careers

What grades do I need at GCSE?

At least a grade 6 in Maths and Combined Science/Physics.

Do I need to do A level Maths?

It would be highly recommended. A Level Physics now includes a 40% Mathematical skill component. and although taking A Level mathematics is not a prerequisite, maths students tend to perform much better.

Is there a lot of practical work?

Physics is a practical subject and there is great emphasis on learning through discovery/investigation.

How does A level Physics differ from GCSE?

A level Physics is a lot more in depth and involves much more independent and practical work.

What are the career options?

There is a huge national shortage of skilled Physicists and therefore Physics offers many opportunities post-18. Many employers actively seek out people who can prove their ability to think logically, understand complex ideas and apply them to the real world.

For more information contact Miss Pettit or Miss Prodromou
Email: kp Pettit@stjohnsschoolcyprus.com or
prodromou@stjohnsschoolcyprus.com



Who should consider studying this course?

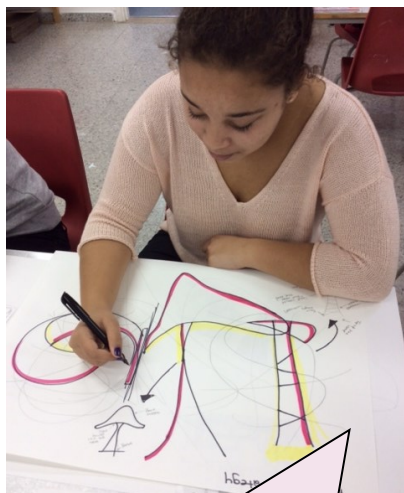
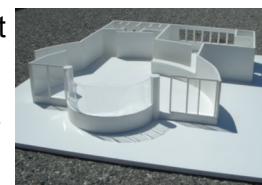
Any student who is creative and who has enjoyed a Design and Technology option at GCSE, ideally gaining a Grade 5 or above.

What units are studied and how are they assessed?

Unit 1: Core technical principles. Much of this theory will be taught practically through a coursework project that will make up a portfolio of work. This is assessed by a 2 hour examination and accounts for 25% of the A-Level.

Unit 2: Additional specialist knowledge. Here we look at specialist Product Design knowledge, through both practical and theory lessons. We study a diverse range of topics, including modern materials and manufacturing processes. This is assessed by a 2 hour examination paper and accounts for 25% of the A-Level.

Unit 3: Coursework Design Project. Students have the freedom to tackle a design problem of their own choice. This is where they can specialise in an area of their own expertise/interest, be it graphics or resistant materials. It involves designing and manufacturing one single product and accounts for 50% of the A-Level.



Student Comments:

"Product Design offered me a fantastic experience in both creative and practical skills. Staff offered wonderful support and helped me achieve my highest quality work".
Anna Wilmot

Frequently asked questions and future careers

So why should I take Product Design?

Students often find that it is an enjoyable subject adding variety to the academic week. The department has excellent value added scores for all of their students and a 100% pass rate.

What subjects does it combine well with?

The A level makes a good combination with the following subjects: - Business Studies, Art and Design, Maths and Physics. There are many careers following this course including engineering and all aspects of design and manufacturing.

What careers can it lead to?

This A Level is a great route into any area in the design industry. In addition to this the results are outstanding and students often find that they use their D&T points to access any number of higher education routes.

For more information contact Mr A Kerr

Email: akerr@stjohnsschoolcyprus.com or

Mrs A Kerr alkerr@stjohnsschoolcyprus.com



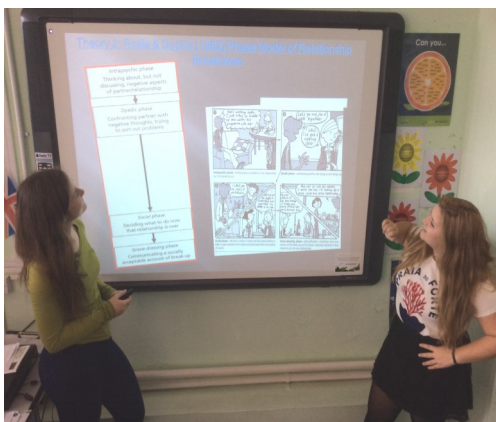
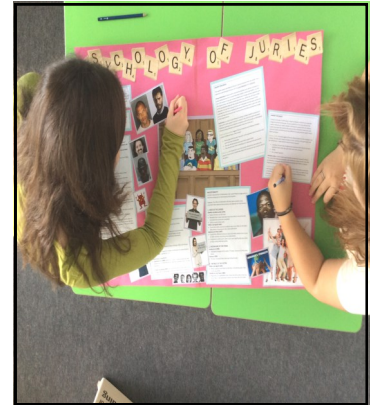
Who should consider studying this course?

This course is an introduction to Psychology for anyone with an interest in finding out more about the various aspects of the subject and how it relates to many aspects of our daily life.

What units are studied and how are they assessed?

A level Psychology is comprised of three exam papers, each worth 33.3% of the total marks. Each paper is two hours long and a mixture of short answer questions based case studies, and longer essay type questions.

- **Paper 1 - Introduction to Psychology.** Topics covered include Social influence, Memory, Attachment and Psychopathology.
- **Paper 2 - Psychology in context.** Topics covered include Approaches to Psychology, Biopsychology, Research methods and Issues and debates within Psychology.
- **Paper 3 - Issues and options within Psychology.** Students chose 3 from 9 optional topics in this paper. Choices include the Psychology of Relationships, Gender, Stress, Schizophrenia, Aggression, Addiction and Forensic Psychology.



Student Comment:

'It's something totally different to GCSE and you can really relate to the content.' **Charlotte**
"The discussions are thought provoking and make you question how people interact." **Callie**

Frequently asked questions and future careers

What GCSE grades do I need to study Psychology?

Few people get the chance to study GCSE Psychology so prior knowledge is not needed. However, due to the nature of the essays and the statistics within the research methods it is strongly recommended that you have at least a grade 5 in English and Maths.

What use is Psychology to me?

Almost all careers have some component of Psychology within them so it is a very useful, general A level to study. Ironically you don't need to do A level Psychology to become a Psychologist as most universities admit students to courses without specifying the need to have A level Psychology.

For more information contact Mr Armstrong
Email: aarmstrong@stjohnsschoolcyprus.com



Who should consider studying this course?

A student with an open mind, interested in the study of the place of religion in modern society (good and bad) and the in-depth study of one religion should consider studying this course. Religion is constantly in the media and if you aim to work with people it is essential to consider issues at a general and particular level and not just accept the headlines! If communication, thinking skills, questioning and deeper understanding of humanity interests you, this is the course for you.

What units are studied and how are they assessed?

We follow the new Edexcel RS A Level course.

Topics to be covered are:

Study of One Major World Religion:

Buddhism

Philosophy and Religion:

Arguments for the existence of God, religious experience; evil and suffering and philosophical language

Ethics:

Different ethical theories; issues concerning ethical decisions
e.g. matters of life and death

Assessment:

Three 2 hour exams at the end of two years.



Student Comment:

"Study RE at A level to develop and expand your knowledge of all people and their beliefs."

"Study RE A level because it is fun and you learn so much about different people."

Frequently asked questions and future careers

How much work will I need to do?

Regular homework will be set including essay writing, reading and research. In addition as an independent learner it is expected that you will keep up to date with current affairs and read from the extensive collection of books available in the department

Where do RE students go?

RE qualifications are stepping stones to any career. Many choose to work with people after their degrees but the ethical questions asked are great in the world of business too.

Past students have gone into teaching, the armed forces, business and engineering courses. Some current students are aiming to study History and PE!

For more information contact Ms O'Sullivan
Email: mosullivan@stjohnsschoolcyprus.com



Who should consider studying this course?

BTEC Sport is a diverse and wide ranging course. You need an obvious interest in PE and sport as well as a lively and enquiring mind. Being a keen performer helps as the course involves some practical aspects. You must also have a genuine interest in the theory side of the subject as a lot of the course will be delivered in the classroom. You need to be willing to explore new ideas independently and be able to communicate them effectively. If you enjoy sport and sporting issues and want to develop your all round knowledge of the subject, this course could be for you.

What units are studied and how are they assessed?

Pearson BTEC Level 3 National Extended Certificate in Sport				
Unit number	Unit title	GLH	Type	How assessed
Mandatory units – learners complete and achieve all units				
1	Anatomy and Physiology	120	Mandatory	External
2	Fitness Training and Programming for Health, Sport and Well-being	120	Mandatory and Synoptic	External
3	Professional Development in the Sports Industry	60	Mandatory	Internal
Optional units – learners complete 1 unit				
4	Sports Leadership	60	Optional	Internal
5	Application of Fitness Testing	60	Optional	Internal
6	Sports Psychology	60	Optional	Internal
7	Practical Sports Performance	60	Optional	Internal



Student Comment:

"Studying BTEC Sport has given me a great foundation to move onto my university course. Learning about how the body works to enable me to perform at my best has really interested me."

J.F 2018

Frequently asked questions and future careers

Do I have to be a good sports performer?

No, very little of the course is practically assessed.

Do I need GCSE PE to take this course?

Yes, it is advised (or level 2 BTEC sport). Otherwise, you will not have the basic knowledge and understanding needed to cope with the demands of the BTEC.

Is there any coursework?

Yes. Units 3-7 will be assignment based.

Is there an exam?

Yes. Units 1 and 2 will be assessed with an external exam.

Which units do St John's Cover?

We will cover unit 1,2,3 in increased detail as these units are compulsory. Depending on the interests/strengths of the class we can be flexible about the final unit as we can choose one from; Unit 4,5,6 or 7.

For more information contact Mr Marsden

Email: fmarsden@stjohnsschoolcyprus.com



Who should consider studying this course?

This course is aimed at students with an interest in travel and tourism who want to continue their education through applied learning and who aim to progress to higher education. No prior study of the sector is needed, but students should have a good range GCSE's or equivalent along with a genuine interest in the industry.

What units are studied and how are they assessed?

Three mandatory units, covering the following content areas:

- the travel and tourism industry – developing the skills needed to examine, interpret and analyse a variety of statistics that measure the importance of tourism to the UK
- different types of destinations and their importance – investigating the features and appeal of global destinations
- customer service – exploring and applying ways of managing internal and external customer experience to support organisational success and to develop customer service skills.

One optional unit

- visitor attractions
- passenger transport
- events, conferences and exhibitions



Frequently asked questions and future careers

I am not sure what I want to do, why should I study this subject? Students can progress to higher education, for example to courses related to business, tourism management and events management.

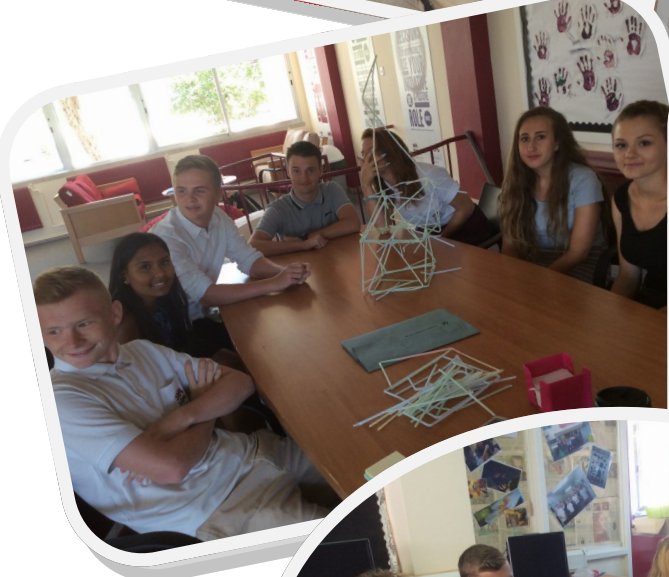
What subjects does it combine well with?

The course would be complimented by studying business or ICT.

What careers could it lead to?

This qualification, when studied with other level 3 qualifications, is designed primarily to support progression to employment following further study at university. However, it can support students progressing to employment directly, or via an apprenticeship. It will provide transferable knowledge, understanding and skills that will be an advantage when applying for a range of industry linked training programmes, or apprenticeships in the travel and tourism sector or another sector of their choice.

For more information contact Mrs Curran Email: bcurran@stjohnsschoolcyprus.com





St John's School, is a MOD School, part of MOD Directorate Children and Young People