

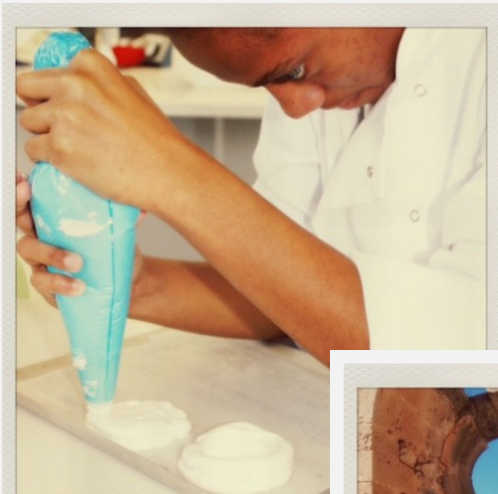


EXCELLENCE • LEARNING • LEADERSHIP

ST JOHN'S
SCHOOL

GCSE Options

September 2015 - June 2017



We are a unique community where learning and leadership ensures excellence for all



Service Children's Education



EXCELLENCE • LEARNING • LEADERSHIP
ST JOHN'S & KING RICHARD
SCHOOLS FEDERATION



Dear Parents / Guardians

During Key Stage 3 (Years 7-9) at St John's all pupils take the same wide range of subjects. This is intended both to lay the foundations of a broad general education and to give pupils at least some experience on which to base their choice of courses in Key Stage 4 (Years 10-11).

The end of year 9 marks an exciting time for students as it provides them with some opportunity to take control over their learning and specialise in subjects where they feel that their strengths lie and in areas that they enjoy.

At this stage in their school career, pupils must now decide, from a range of subjects, which together with the compulsory subjects; English, Mathematics and Science will form their GCSE examination courses. The construction of a study programme is very much a matter for the individual and before final decisions are made a good deal of consultation needs to take place.

In weighing possibilities, pupils and parents are advised to keep in mind the following points:

1. **The needs of the pupil in the light of future career requirements.** The Careers Service, based at St John's, is on hand to advise on this when required.
2. **The importance of preserving a reasonable balance between the main subject areas.** The core, compulsory curriculum ensures this balance however it is still important to choose subjects that will keep as many career doors open for as long as possible.
3. **The interest and enjoyment of the subject for the pupil.** We encourage all students to opt for subjects that they enjoy.
4. **The ability and aptitude of the pupil in regard to a particular subject.** The Learning Review Day, Options Afternoon and School Report will help students to choose subjects that are well suited to their abilities.
5. **All courses listed are scheduled to run for two years.** If you know that you will be posted during the next two years you should contact the school to discuss this with Mrs Cambridge or Mr Armstrong.
6. **Sometimes a "perfect" fit in terms of choice cannot be obtained.** This is true irrespective of the size of a school but we are confident that the entry requirements for all of the normal range of careers can be gained through our scheme.



As a Year 9 student at St John's, the time has come for you to take part in planning your programme of study for the next two years.

What should I think about?

- What your strengths and weaknesses are.
- Which subjects you enjoy.
- Which subjects you will need in the future without closing any doors.
- What you want to do when you are 16.

Who can help me choose?

- Your parents
- Your Form Teacher
- Your Head of Year
- The Careers Officer—Miss Moloney
- Mr Armstrong—Vice principal.

How do I find out what is available?

- Study this booklet carefully
- Talk to all those who can help
- Think carefully for yourself

What do I do then?

Attend the Options afternoon on Wednesday 25th March, then you complete your 'Options' form very carefully and hand it to your form tutor by **Monday 13th April**.

It should be pointed out that just because a course is described here, **it does not mean that it will be offered**. If only a few students opt for a course or there are last minute changes to staffing, we may not be able to offer it. However we will do our very best to ensure that all options will be available.



The Careers Adviser Miss S Moloney

Please feel free to consult the Careers Advisor, Miss Sue Moloney, based in the school on any matter related to the options process and career planning. Some students have a clear idea of what they would like to do in the future and how to achieve their goals but many do not and it is also likely that as students' knowledge and experience widens their plans and ideas may change. A discussion with the Careers Advisor about GCSE options and future pathways can be helpful in alleviating any fears students may have about how their current choices may affect their future careers. Miss Moloney will meet with students throughout their GCSE courses to discuss issues including further education, work with training and career planning, parents are welcome to attend all careers interviews and will be advised in advance of scheduled appointments during years 10 and 11. The Careers Advisor can be contacted on Tele: 25968005 should you or your child wish to speak to her during the options process.

The EBacc (or English Baccalaureate)

Two years ago the Government introduced a new measure for schools – the English Baccalaureate (EBacc). A student will achieve the EBacc if they achieve a grade C or above in English, Mathematics, 2 Sciences, a Modern Foreign Language and History or Geography (6 specific GCSE qualifications in total). There is **no certificate** available for students attaining this measure however the subjects represent a broad and balanced curriculum offer, which is a strength, and Ebacc subjects are often seen favourably by Colleges and Universities in future applications.

At St John's School, our curriculum provision includes all of the EBacc subjects (a Modern Foreign Language, Double Science or Triple Science, History and Geography); all of which are very popular subjects. Unless there are exceptional circumstances, we would expect students to choose at least one EBacc subject, although students may opt to study EBacc subjects in all of the option blocks. EBacc subjects in the option blocks are indicated by a *, but if you are unsure of anything simply ask a member of staff for further clarification.

Works Experience

For a very small number of students it may not be advisable to study the full number of GCSEs. If the works experience programme is recommended for your son or daughter we will discuss the details with you in full before any decision is made to begin this programme. The only real difference though is that these students study Single and not Double Science and take one less option subject. The time gained, about 9 hours per fortnight, will be taken up with a bespoke package of work related learning such as ASDAN qualifications and some work placement opportunities.



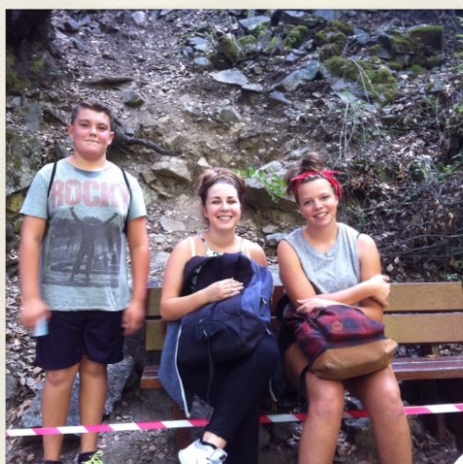
Options Afternoon

During the Options Afternoon, subjects will present student work, text books, resources and exam papers as well as talking to students and parents about what it might be like to study their subject and there will be a chance to discuss student suitability. We are very focused on matching students to the correct choices for them.

Please feel free to ask for further clarification and assistance from the school in any decision that you are unsure about.

Settling in to Y10

In the first week of the Y10 program students are taken to Troodos camp with their tutors and head of year to spend a couple of days looking at the expectations of the school for their GCSE studies, building ambition and teamwork through a variety of challenges and workshops. This is an incredibly useful experience and you will be informed about it towards the end of Y9 or during the induction process at the start of Y10.



A mountain hike



Team building challenges

Duke of Edinburgh

Our Y10 students are also offered the opportunity to partake in the Duke of Edinburgh Bronze award in collaboration with the Youth Service and this is an enriching experience for all students involved. Information about this extra curricular club will be presented to students in the first term in Y10.

Options: Calendar of events



The following calendar of events is designed to help you stay on track during the options process. If, for some reason, you are likely to miss any of the dates below then please do contact the school so that alternative arrangements can be made.

OPTIONS PROCEDURE 2015

| | | |
|----|---|---|
| 1. | Monday 2nd March | National careers week. Miss Moloney to coordinate events which will include a careers lesson for each Yr9 class. |
| 2. | Friday 27th February | Options booklets and invite to Options afternoon are sent home with students. |
| 3. | Thursday 12th March | Year 9 Learning Review Day - gives a chance to discuss students interests and strengths with their tutor before taking options. |
| 4. | Wednesday 25th March | Year 9 Options afternoon. This provides a chance to meet subject teachers to discuss in more detail the options on offer. |
| 5. | Monday 13th April to Friday 17th April. | Further opportunity for any guidance / meetings with staff, parents and students to assist with Option choices. |
| 6. | Monday 20th April | Completed option forms handed in to Form Tutor. |
| 7. | Tuesday 7th April | Option choices confirmed. |





The Curriculum for Years 10 and 11 aims to give pupils access to specific skills and bodies of knowledge necessary to prepare them for life as adults, able to pursue responsible and active participation in our society. This curriculum must provide an education related as closely as possible to our counterparts in the United Kingdom. These two years should be seen as an integral unit of study, leading to assessment and the subsequent awarding of GCSE certificates.

The curriculum for each pupil will contain the following elements:

a) **Core Curriculum**

English Language and English Literature (8 lessons per fortnight)

Mathematics (8 lessons per fortnight)

Science (Dual certification - 2 GCSEs) (9 lessons per fortnight)

Physical Education (4 lessons per fortnight)

Social, Moral and Spiritual Education (1 lesson per fortnight)

and

b) **Optional GCSE Subjects**

4 Optional Subjects—one from each option block (5 lessons per fortnight)

All students must select at least 1 EBacc subject as indicated by the *.

NB - Students may of course select up to four Ebacc subjects if they wish to.

| Block A | Block B | Block C | Block D |
|------------------|------------------|-------------|----------------------------------|
| German* | Art | Music | PE |
| French* | History* | Geography* | Further Addition- al Science* |
| System & Control | Business Studies | Engineering | Food Technology |
| Drama | Product design | RE | IT |
| | | | |

NB: In 2017 GCSE English and Maths will be graded 9 –1 with 9 being the highest grade. In all other subjects A* - G grades remain.

Options: Notes and Questions



A large, empty rectangular box with a thin black border, intended for notes and questions.



| <u>Subject</u> | <u>Page</u> |
|----------------------------|--------------------|
| English (Core) | 10 |
| Mathematics (Core) | 11 |
| Science (Core) | 12 –13 |
| Physical Education (Core) | 14 |
| SMSC (Core) | 15 |
| Optional Subjects at KS4 | 16 |
| ICT | 17 |
| Business Studies | 18 |
| History | 19 |
| RE | 20 |
| Geography | 21 |
| French and German | 22 |
| Drama | 23 |
| Music | 24 |
| Art | 25 |
| GCSE Physical Education | 26 |
| D&T: Catering | 27 |
| D&T: Product Design | 28 |
| D&T: Systems & Control | 29 |
| Engineering | 30 |
| Further Additional Science | 31 |



GCSE English Language and English Literature Grades 9-1

AQA (8700) & AQA (8702)

All students will be entered for AQA GCSE English Language and English Literature. This will lead to two separate GCSE qualifications. Both courses are assessed entirely by external examinations which take place at the end of Year 11. There will be no Controlled Assessments as in previous years.

A separate grade will be awarded for Spoken Language. This element of the course will be assessed internally. This does not contribute to the award of the final GCSE grade.

Subject Name : English Language

Students will sit two examination papers at the end of Year 11.

Paper 1: Explorations in Reading and Writing (50%)

Paper 2: Writers' viewpoints and perspectives (50%)

Subject Name : English Literature

Students will sit two examination papers at the end of Year 11

Paper 1 : Shakespeare and the 19th Century Novel (40%)

Paper 2 : Modern Texts and Poetry (60%)

Spoken Language (for which a separate grade will be awarded)

- Presenting
- Responding to questions and feedback
- Use of Standard English

Contact: Dr. D. A. Kelly

English Language

The course requires students to study:

Literary fiction - extracts from novels and short stories from the 20th or 21st centuries focusing on how writers use narrative and descriptive techniques to capture the interest of readers.

Narrative and Descriptive Writing - how to produce original narrative or descriptive writing.

Non-fiction and literary non-fiction - articles, reports, essays, travel writing, accounts, letters, diaries, reports, autobiography and biographical passages.

Writing to present a viewpoint - how to produce original writing which presents a point

English Literature

The course requires students to study:

Shakespeare – Students study one play by Shakespeare from a prescribed list.

The 19th Century Novel – students study one complete novel from a prescribed list.

Modern Texts – students study **either** a modern prose **or** modern drama text

Poetry – students study a cluster of poems from an AQA Anthology

Unseen poetry – students will be required to develop the skills to answer questions on unseen poetry.



GCSE MATHEMATICS Grades 9-1

At St John's we will follow the New EDEXCEL Mathematics (9-1) Syllabus, and all students will be assessed either at Foundation Tier which will enable grades 5 to 1 to be gained or at Higher Tier where grades 9 to 3 are available. The majority of our students will take the Higher Tier Paper. Our results are normally excellent and most students achieve a higher level pass at GCSE, many at the highest grades.

Business, commerce, science, medicine, computer programming and engineering are obvious areas where mathematics plays an important role, but almost any job will involve the use of some mathematics. Knowledge of mathematics is also culturally important.

At St John's we aim to help students to achieve their best possible grade to enable them to move onto their next stage of learning whether it be a grade 9, 5, 4 or 2. At the same time we want our students to be confident in their use of mathematics and appreciate its cultural role.

The appropriate level of study will be determined by a student's performance at Key Stage 3, (where appropriate), and by their teacher's assessment.

The final examination will consist of 3 written papers, each lasting an hour and a half, the first of which will be a non-calculator paper.

Students are expected to bring a scientific calculator to each mathematics lesson and a school approved calculator is available from the school office for €10.00

Contact: Mr McKenzie



Refurbished Maths Classroom





GCSE DOUBLE SCIENCE GRADES 2 X A*-G (AQA)

AQA (4406 & 4408)

All students study for 2 GCSEs in Science. In Year 10 all students will take AQA Science A (previously Core Science) and in Year 11 AQA Additional Science.

Year 10 - The Year 10 course is comprised of the following units :-

- Biology 1a: Diet, exercise, hormones, genes and drugs.
- Biology 1b: Surviving and changing in the Environment.
- Chemistry 1a: Atoms, rocks, metals and fuels.
- Chemistry 1b: Polymers, plant oils, the Earth and its atmosphere.
- Physics 1a: Energy and Efficiency.
- Physics 1b: Electrical energy and waves.

Both exams take place in June as 2 x 90 minute papers. Both exams are a combination of Biology, Chemistry and Physics. These exams count for 40% and 35% of the overall GCSE mark. In addition the final 25% is an internally assessed unit in which students are examined on experimental work conducted in class. This links in with the "How Science Works" ethos of GCSE science. By the end of Year 10 all students will have finished Science A and this is normally awarded in the August after they complete Year 10.

Year 11 - The Year 11 course is comprised of the following units :-

- Biology 2a : Cells and the growing plant.
- Biology 2b : Genes & proteins, inheritance, gene technology and speciation.
- Chemistry 2a: Structures, properties and uses.
- Chemistry 2b: Rates, energy, salts and electrolysis.
- Physics 2a : Forces and motion.
- Physics 2b : Electricity and Radiation.

The content of the Additional Science course follows on from that of GCSE Science and again is examined as 3 x 1 hour papers and the final 25% by internal assessment, similar to Science A. However, Additional Science has a greater emphasis on explaining, theorising and modelling in science. The Additional Science course provides a firm basis for any further Science studies, such as AS and A Level. Again this is normally awarded in the August after completion.

Contact: Mr A Glencross



GCSE SINGLE SCIENCE AQA GRADE 1 X A*-G (AQA)

Pupils have the option of just studying Science A over 2 academic years. This is exactly the same qualification as described on the previous page but pupils would study 6 hours of Science every 2 weeks. The exams would be taken at the end of year 11 in June 2017 and certification would normally be in August 2017. As this course is being phased out please note that there would be no opportunity to re-sit these exams.

FAQ

What is dual award/double award Science?

Dual Award/Double award Science has become increasingly popular in the last 15 years. It contains two thirds of a GCSE each in Biology, Chemistry and Physics and enables pupils to study comprehensively the key concepts in all three Sciences without “eating up” too much curriculum time?

Can my son/daughter go on to study a Science based course at University by taking double Science ?

Absolutely! Double Science is a perfectly adequate foundation to go on and take A level Sciences and then to study a Science, an engineering based degree Medicine or a veterinary degree.

Contact: Mr A Glencross (ag@sjs.ac.cy)



Practical learning in Science

Core: Physical Education



Physical Education in Key Stage 4 develops students' competence and confidence to take part in a range of physical activities that will hopefully become a central part of their lives, both in and out of school.

Our PE curriculum enables all students to enjoy and succeed in many kinds of physical activity. Students will work as individuals, in groups and in teams, developing concepts of fairness and of personal and social responsibility. They take on different roles and responsibilities, including leadership, coaching and officiating. Through the range of experiences that PE offers, students will learn how to be effective in competitive, creative and challenging situations. Discovering what they like to do will help students make informed choices about lifelong physical activity.

Contact: Mr Harris



Y11 prom an amazing setting for a wonderful evening



Duke of Edinburgh expedition
What an amazing place to explore



Coastal studies in South Wales



German Exchange
Making the most of Cyprus with our German visitors



Social, moral, spiritual and cultural education in Key Stage 4 means that students follow a combination of the following topics:

Careers and Work Related Learning. This includes visits from the careers office, laws relating to the world of work, WEX preparation and job application.

SRE (Sex and Relationship Education). This includes the role of families and parenting, STIs and contraception and coping with loss and bereavement. St John's works in partnership with the school nurse in delivering these units.

Personal and Social Education. Building a positive self-image – self-esteem, team work and developing healthy lifestyles. Pupils have the opportunity to investigate substance use and misuse (alcohol and drugs) and debate their findings in class. St John's currently works in partnership with CJPU.

Economic Well Being. Pupils get the opportunity to look at personal finance, government finance and taxation, debt and money management.

The Law. In Year 11, pupils have the opportunity to discuss different types of law and how the law affects them and the community in which they live. Through the discussion of case studies, students will attempt to understand the controversial aspects of the law e.g. Euthanasia, Death Row and the Death Penalty.

Active Citizenship. All pupils are encouraged to take part in a community based project where they work as a team to give something back to their local community.

Media. Students learn what the media is and how it influences our daily life, particularly through advertisements and films. They look at case studies to investigate and judge whether the media is partially responsible for fatal incidents such as Jamie Bulger, Aurora cinema shooting (*Batman: Dark Night Rises*).

RE. These lessons will broaden the pupils understanding of world religions and issues related to belief, faith and spirituality. They will focus on current issues and underlying principles of morality and ethics.

Although St John's follows the PSHE, Work related learning and Citizenship syllabuses, some of the above may be subject to change due to the nature of current affairs and changes in personnel who we work within the community.

Contact: Mrs Brooks



This page has been left blank intentionally



OCR Information and Communication Technology GCSE (J461)

Grade range: A* - G

We live in a world full of all kinds of technology. Everywhere you turn some has a device which helps us to work, communicate and even play using technology.

This course will provide opportunities to become both independent learners and competent ICT users. It also aims to raise awareness and gain experience of the use of technology and ICT for individuals, organisations and society as a whole.

The course provides the use of practical skills, knowledge and understanding of ICT and coding in a range of contexts by producing solutions to real-life business problems.

FAQ:

Who is the course suitable for?

The course is suitable for students who enjoy problem solving using ICT applications.

What skills must I possess to be successful in this course?

You need to be able to evaluate solutions and identify possible improvements or refinements in your work.

How will the course help me in the future?

You will develop skills to work collaboratively with others.

Understand the current and emerging technologies and their impact on society.

Acquire a good grounding for further ICT or Computing courses at AS and A level.

During the course students will study:

- ICT in today's world
- Practical applications in ICT
- ICT in context
- Creative multimedia or Coding a solution

Each element of the course is worth 60 marks.

Two of the units are controlled assessment worth 30% of the course each.

The other two units are written papers both worth 20% of the course each.



*Great facilities
Help and support*

This course gives students an excellent opportunity to prepare themselves for our developing world and useful skills for future employment.



GCSE BUSINESS STUDIES Grades A*-G **AQA GCSE (4133)**

The course is designed to encourage students to consider the practical application of business concepts. It will allow students to understand the importance of Business in any community and their own role within it.

The course is delivered by trying to relate theoretical business concepts with real business practice to enable students to develop the skills needed to be successful in the final GCSE examination. Classroom teaching will be complimented by the study of current Business news, topical Business television programmes and practical Business visits to local businesses.

What will be covered?

The GCSE course is a broad based course covering all the main areas of Business Studies including; Marketing, Accounting and Finance, Human Resources, the Legal Environment, Business Planning and Production.

Where can it lead?

GCSE Business Studies is a versatile subject which can lead to a range of opportunities for further study. These include a variety of A levels including Business Studies, Finance and Economics. It also lends itself to supporting progression into vocationally based courses. It will also help students looking to move into the world of work by developing skills in personal finance, enterprise and communication.

Structure of the course and assessment

Students will be following the AQA GCSE (4133) Business specification. It is a modular course made up of three units:

- Unit 1 - Setting up a Business (40%)
- Unit 2 - Growing as a Business (35%)
- Unit 3 - Controlled Assessment
 - Investigating Small Businesses (25%)

Both Units 1 and 2 will be examined in June of Y11.

Unit 3 - CA will be started in June of Y10 and completed in the first half-term of Y11.

Contact: Mrs Schapendonk



Case study a restaurant business



GCSE HISTORY Grades A*-G

OCR Schools History Project

Why study History at GCSE?

History gives you the opportunity to understand the world around you and how it came into being. Studying history also provides you with a wide variety of skills, during the course you will become highly skilled at testing evidence, making judgements and interpreting why people hold the views they do.

The history GCSE also provides the opportunity to see people at their very best and their very worst, in their moments of triumph and despair.

The Course

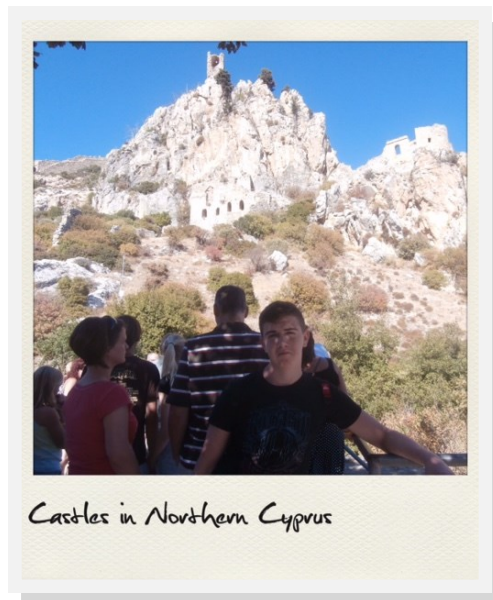
The History GCSE we offer at St John's is the School History Project from OCR. The course is split into four modules:

1. **The Development Study:** A study in the development of medicine through time. In this course we look at the way that medicine has developed from the earliest of times when prehistoric people tried to cure illness by scraping holes in the sick person's head to modern day keyhole surgery.
2. **The Historical Source Investigation:** This is a separate exam based on Public Health between 1800 and 1914 in which you can show your detective skills when examining sources.
3. **The Depth study:** A study in depth of the American West. In this module we examine how America grew into a superpower through its expansion into the western half of the USA between 1840 and 1895.
4. **The Local Study:** A study of the history around us. How much can Kolossi Castle tell us about the development of castles across Cyprus? Is it a one off or part of a bigger picture?

Next steps:

History GCSE provides you with the skills of analysis, evaluation, synthesis and judgement that opens up a variety of professional avenues. It is also a very interesting course in its own right.

Contact: Mr J Strang or Mrs Brooks





GCSE RE - Grades A* - G AQA Religious Studies Option B.

Why choose RE?

RE is the subject for you if you are interested in the world and the relationships between people and nations and cultures. If you are going to work with people in the future it will encourage you to be open-minded and tolerant while working out your own views and opinions on things.

What will I learn and how will it be assessed?

There will be 2 90 minute exam papers.

Unit 2 Religion and Life Issues:

Answering on **4** of the following:

Religion and Animal Rights

Religions and Planet Earth

Religion and Prejudice

Religion and Early Life

Religion and War and Peace

Religion and Young People

Unit 6 Worship and Key Beliefs

Answering on **4** of the following:

Places of Worship

Worship

Pilgrimage

Origins and Beliefs

Practices and Belonging

Authority

Remember that you have a lot of knowledge about these issues, and you can use that in your exams.

The course will help you develop your knowledge and understanding of religion by exploring the impact of religious beliefs and values on moral behaviour and religious practice. You will explore the views of believers in Christianity and Islam and develop your skills in evaluating them and in explaining your own reasoned opinions.

Any questions?

Contact: Ms O'Sullivan



Student Comments—

RE is really good. We learn lots about different faiths in a fun and interesting way.



GCSE GEOGRAPHY Grades A*-G (Higher Tier A*-D or Foundation Tier C-G)

The Course

We follow the WJEC B syllabus and studying the following areas in reverse order:

Theme 1: Challenges of Living in a Built Environment.

Theme 2: People and the Natural World Interactions.

Theme 3: People Work and Development.

Included within these themes are topics such as international development, sustainability, globalisation, weather, ecosystems, desertification and planning issues.

How are you assessed?

We have one piece of controlled assessment to complete. This is worth **25%** and is based on your fieldwork data collected in Year 10. The remaining **75%** is assessed by two written exams with tiered entry available.

Why study Geography?

In the classroom

- ⇒ To understand the world around you and the role you have to play in shaping it.
- ⇒ To understand the impacts we have on our environment and the consequences of these actions.
- ⇒ To be able to 'read' a landscape and appreciate why it looks that way.
- ⇒ To develop your ICT skills to research and present information.
- ⇒ To have the opportunity to collect, process and analyse primary data collected on fieldwork visits.
- ⇒ To debate controversial issues whilst considering the perspectives of other people.

In the 'real world'

- ⇒ Geography is the only subject that truly occupies the middle ground between the sciences and the arts. It encompasses scientific, political, economic and environmental issues which will help you to develop your own opinions.
- ⇒ **Employers and universities want people who can work in a team** – fieldwork develops these skills.
- ⇒ **Employers and universities want people who can analyse their own work** – the enquiry style of learning teaches you these skills.
- ⇒ **Employers and universities want people who are computer literate** – you will be using ICT frequently, from Google Earth and 3D maps to a GIS package.
- ⇒ **Employers and universities want people who are environmentally aware** – geographers understand the links between people and places better than anyone else.



Field studies for GCSE coursework



Coastal studies in South Wales

Contact: Mrs Dixon or
Ms Jackson



GCSE FRENCH and / or German Grades A*-G Edexcel: 2FR01 & 2GN01

“Why should I study French or German?”

French and German are highly respected academic subjects in the eyes of Colleges and Universities. The world is becoming more and more international. Many people can now expect to travel abroad as part of their job or meet foreigners in their own country.

“Everybody speaks English anyway.”

The UK and Cyprus are part of the European Union. Over 320 million inhabitants of Europe do not speak English as their mother tongue. How can we communicate with them unless we learn foreign languages?

“There aren’t any jobs which use languages.”

The type of job where languages are the main part of the job can include: translating, interpreting, teaching, tourism, marketing, secretarial duties, International banking, etc.

You should also consider that you are likely to holiday in a French speaking country at some point in the future or possibly live in Germany as part of a posting. German is the most widely spoken language in Europe (Germany, Austria, Switzerland)

“Which skills does it include?”

Listening, speaking, reading, writing, as well as guessing, imitating, team working, plus many more! It can also have a positive impact on your learning of English too!

“How is it assessed?”

GCSE is assessed in the language skills of listening, speaking, reading and writing at the end of the course as follows:

- Listening Exam = 20%
- Reading Exam = 20%
- Speaking (controlled assessment) = 30%
- Writing (controlled assessment) = 30%

Students can be entered for either higher or foundation level in listening and reading. All pupils at the end of the course should be able to cope with the vast majority of everyday situations likely to arise in the foreign country.



A December visit to Germany
A big contrast from Cyprus



Testing language skills on public transport

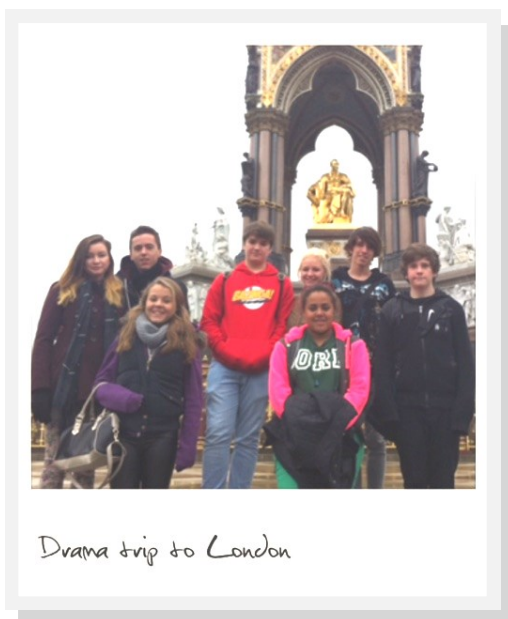


GCSE Drama Grades A*-G

AQA: GCSE DRAMA

Drama is an exciting, creative and challenging course. Over the two years, students will study a range of different styles of drama and deepen their knowledge of performance and technical skills.

Practical:



Drama trip to London

GCSE Drama students are required to create and perform work for assessment. Over the two years they will complete between four and five pieces of work which will be assessed and the best two will be used to make up 60% of the overall grade.

They will be able to use a variety of skills to gain their marks including script work and physical theatre. Also, those interested in the more technical side of theatre, will have an opportunity to apply their skills by supporting the work of others in the group to gain their marks.

There will be public performances during the course that all students will be expected to take part in. This is not to say that every assessment will be public but many will, so be prepared.

Written Exam:

The written element should not be taken lightly. The final written exam is worth 40% of the overall grade and requires excellent time management. The areas covered in the exam are:

- A - Practical work completed during the course.
- B - Study and performance of a scripted play.
- C - Study of live theatre seen.

To meet the requirements of the course, students will be expected to attend a theatre trip to London. This will take place in year 10 and provide students with the experience needed to complete all aspects of the course.

Students opting for this course need to have a genuine interest in the subject and should be able to cooperate well with others.

Contact: Mrs Lister



GCSE Music Grades A* - G

GCSE Music is open to ANY student who enjoys listening to Music, whether that be Rock, Pop, Jazz, Blues, Reggae, Classical, House, Indie, Hip-Hop, Garage, Opera, or even just having the radio on in the background, listening to a variety of styles.

It is necessary to either play a musical instrument or to be able to sing to be successful in this course.

So, what does the course involve?

Performing (30% Coursework)

Two performances – one solo piece and one ensemble piece (2 or more players)
The performances are recorded onto CD and marked by Mrs Edwards– they are then sent away to be moderated by the Exam board. You can perform ANY piece of music you like – anything from Opera to Heavy Metal – and your performances will be prepared over the 2-year period

Composing (30% Coursework)

You have to complete TWO pieces of composition coursework as part of the exam. These must link with 2 of the areas of study from the list below. This will be completed during lesson time with the help of the teacher.

Listening/Appraising (40% Exam)

In May/June of Year 11, there is one listening paper that lasts approximately 1 and a half hours – many of the questions are multiple choice and the paper runs along with a CD. This is marked by the Exam Board.



Live music and an opportunity to shine

There are 4 Areas of Study:

- Music In Wales (incl. Manics/Super Furries, Folk)
- Music Evolution (computerised/ synthesised sounds Music Tech)
- Music for Stage & Screen (film & TV Music/Musicals, etc.)
- Musical Forms & Devices (how music is made up and created)

The GCSE course is enjoyable and mostly practical – it is good fun!

You don't have to be a budding Leona Lewis or Robbie Williams – if you enjoy doing practical activities and you enjoy your own style of Music then this course is for you. It allows you to be totally creative and to experiment with different ideas, different instruments and with Music Technology.



Performing with professional musicians

Contact: Mrs Edwards



GCSE ART Grades A* - G AQA (Art & Design, Fine Art, Graphic Communication)

Why should I do GCSE Art?

If you asking yourself, why should I do Art, perhaps you are approaching this in the wrong way and should be asking "Why not?" Ultimately you will choose Art because you enjoy it. But remember there will be points when the workload is heavy and enjoyment will simply not be enough to see you through. Being willing to approach the subject with commitment and to work hard, are also important aspects.

GCSE Art can open a vast array of career opportunities in the creative industries and other courses in further education. More importantly it will teach you a whole variety of different skills, ranging from time management, to planning and undertaking research projects.

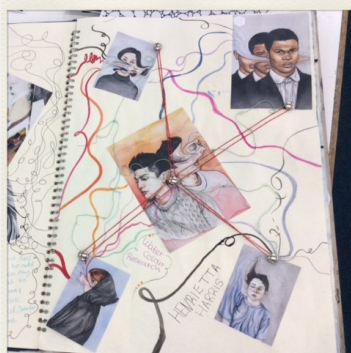
Art GCSE will develop your own self-awareness and help develop a greater appreciation of the world around you.

Art GCSE consists of two main elements:

1. Coursework which accounts for 60% of your final mark. Here you are required to submit a minimum of two extended units of work. These units will demonstrate an ability to sustain work from an initial starting point to a final conclusion. Students have to demonstrate that they can work successfully in a range of different materials and also undertake critical and contextual studies. A major supporting element of the coursework is the sketchbook, which students are expected to commit at least 1 hour of home study to.
2. The final exam which accounts for the final 40% is usually taken in mid-April of the second year of the course. Over a 10 hour period, students are expected to complete a piece of work which they have researched and planned for during the previous months. The exam paper is usually circulated in mid-January and students select a starting point from a range of stimulus.

There are a variety of endorsed courses that can be followed in Art, but coursework is easily transferable from one exam body to another. Grade range is from A* to G, but it important to remember that students make up the vast percentage of their final grade through their coursework.

Art GCSE is both fun and challenging. Have a talk with Mr. Bougeard if you would like any more information about the subject or have any questions, or email him at pbu@sjs.ac.cy



GCSE Art sketch book work



GCSE Art Coursework



GCSE PHYSICAL EDUCATION Grades A*-G

(Edexcel 2PE01)



Is this the right subject for me?

The GCSE Physical Education course will appeal to you if you:

- Have a keen interest in sport and recreation and always look forward to your PE lessons
- Take part in sport/recreation outside of class time
- Want to follow a course that develops knowledge and understanding through practical involvement
- Want to know more about the benefits of sport and exercise
- Want to improve your own performance in a range of sports roles
- Want to study a course that is active and that you will enjoy
- Are considering a sports-related career or an A Level/Higher Education course.

What will I learn?

You will:

- Develop your knowledge and practical skills in a range of physical activities
- Examine the effects of exercise and how training can improve performance
- Find ways to improve your own performances in a variety of roles
- Identify ways to develop and maintain a healthy and active lifestyle through participation in physical activity
- Appreciate the benefits of promoting 'sport for all.'



Swimming in the St. John's school pool

How will I be assessed?

The GCSE course is assessed over two units.

Unit 1:

is externally assessed through a written examination paper of 1 hour and 30 minutes. This will contribute a maximum of 40 per cent towards your total marks.

Unit 2:

is assessed in two sections.

Section 1

Four practical performances in the role of either player/participant, leader or official. You can achieve 48 per cent of the marks from your four performances, two of which **may** be in the role of a leader or official.

Section 2

Analysis of performance in one of the chosen activities. This will be worth 12 per cent of the marks and should include planning, performing and evaluating a Personal Exercise Programme.



Professional rugby coaching

Contact: Mr Harris

Options: Catering



GCSE Catering TECHNOLOGY Grades A*-G

A course in *Catering* offers an unique opportunity in the curriculum for candidates to develop their knowledge and extend their skills within catering in a vocational context. It will provide opportunities to develop candidates food preparation skills as well as their capacity for imaginative, innovative thinking, creativity and independence.

It is a suitable qualification for those who want a broad background in this area and for those who wish to progress to further education. It will offer valuable preparation for those entering the world of work.

The course consists of 2 units

UNIT 1: Catering skills related to food preparation and service

Two practical tasks selected from a bank of six WJEC set tasks. One in Year 10 and one in Year 11 which will involve a practical exam and written coursework.

For example:-

The local hotel in your area is holding an international week. As the trainee chef you have been invited to take part and have been asked to prepare a two-course meal from a country of your choice.

UNIT 2: Catering, food and the customer

Written Paper 1 ¼ hours - Year 11

GCSE Catering suitable for

- Students who enjoy working with food and would like to become a better cook.
- Students who are good at organisation and learn better through practical tasks
- Students who take pride in good presentation.
- Students who think that they would enjoy this course.

If you choose Catering at GCSE, some areas you will study include:

- The industry – food and drink.
- Job roles, employment opportunities and relevant training.
- Health, safety and hygiene.
- Food preparation, cooking and presentation.
- Nutrition and menu planning.
- Costing and portion control.
- Specialist equipment.
- Communication and record keeping.
- Environmental considerations.

Assessment

Coursework projects (60%):

One final written examination (40%)

Contact: Ms Small



Note Catering is essentially a practical subject and if you choose this course you will be expected to bring ingredients every week! You will also need to develop good communication and social skills for group and individual work.



GCSE Product Design Grades A*-G (AQA)

In this two-year course you will be taught how to work in a range of graphic and resistant materials and how the materials are used in industry to produce modern day items. These skills will develop understanding and improve your design and making skills. Drawing and presentation are key areas of development. This course is taught practically as much as possible but thorough preparation for the written / design exam will be a focus throughout both year 10 and 11 to ensure students are also confident in this area.

GCSE Product Design is suitable for

- Students who would like to learn more about design, both drawn by hand, and using the computer and who take pride in good presentation.
- Students who are good at keeping up to date with coursework.
- Students who enjoy practical work in the workshop.

Examples of projects include edible hamster house design, band promotional products, Money box design, guitar stand design and storage projects.

If you choose Product Design at GCSE, some areas you will study include:

- Sketching 2D and 3D.
- Woods and workshop skills with woods
- CAD/CAM graphic manipulation to create images and using the laser cutter.
- Working drawings using third angle orthographic.
- Modelling packaging and 3D products
- Plastics, how to work with them and their uses.
- The design industry and a history of 20th century design.
- Use a range of computer programs.

Assessment

Coursework project (60%):
One final written
examination (40%)

Contact: Mrs Kerr



Graphics based projects



*Resistant material based projects
Wood, plastic, metal*



GCSE SYSTEMS & CONTROL TECHNOLOGY Grades A*-G (AQA)

We live in a world where most of the objects around us do something useful, whether it is the alarm that wakes us or the bike that we are riding. These are some examples of the types of systems we will study on this course. This course covers a wide range of topics, including making items using electronics and mechanisms, as well as using a variety of traditional and modern materials. This course is recommended for those students in the top maths set.

This course **GCSE Systems & Control Technology is suitable for**

- Students who enjoy making in the workshops and enjoy applying their knowledge in practical activities.
- Students who enjoy solving problems and can develop solutions using their writing and sketching skills.
- Students who are good at managing their own deadlines for work and can work with interest on longer tasks.



Prototyping working products

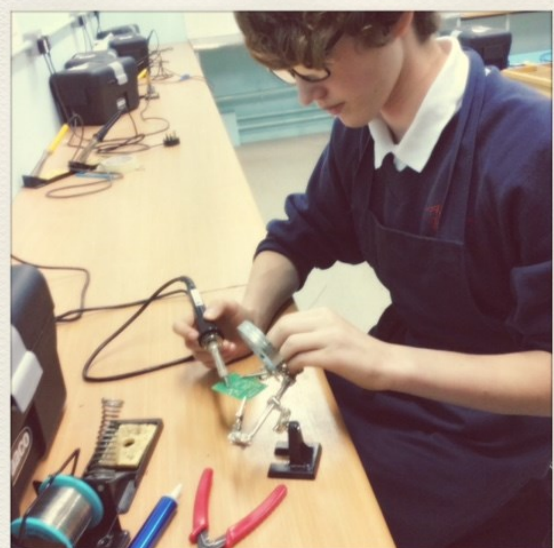
You will be involved in practical projects using a wide range of skills, tools and materials appropriate to your interests and abilities.

If you choose Systems & Control at GCSE, some areas you will study include:

- How to build electronic, mechanical and pneumatic products.
- How to incorporate woods, metals, plastics and composites to make fully functioning products.
- Learn how to program integrated computer chips to perform and control tasks.
- Computer Aided Design programs (CAD) & Computer Aided Manufacture (CAM).
- How items are made in industrial manufacturing.

Assessment

One final assessed coursework project, approximately 45 hours of work (60%)
One final written examination (40%)



Soldering and making electronic circuit boards



GCSE ENGINEERING (Single Award) Grades A* - G (AQA)

In this two year course you will be taught how to work in a range of engineering materials and how engineering techniques and processes are used to manufacture products. This qualification allows students to develop skills and understanding which will be of use as part of a career path leading to further technical or academic qualifications.

GCSE Engineering is suitable for

- Students that can think creatively to solve problems
- Students that enjoy designing, developing and making products
- Students that are well organised and able to work to deadlines

You will be involved in a wide range of practical projects including designing and making MP3 players, tools and measuring equipment and interpreting engineering drawings.

If you choose Engineering at GCSE some areas you will study include:

- Engineering Design and Technical Drawing
- 2D and 3D computer modelling using Computer Aided Design (CAD)
- Using Computer Aided Manufacturing (CAM)
- Using Computer Numerical Control (CNC) milling and routing.
- Hot process including brazing, casting, soldering, forging and welding
- Electronics and Robotics
- Industrial process and techniques
- Engineering Manufacturing in Metals and Plastics

Assessment

Coursework project (60%)

One final written examination (40%)

What will GCSE Engineering lead to in the future?

Currently in the UK there is a critical shortage of skilled Engineers and technicians. GCSE Engineering is a first step towards an engineering career. It could lead you to an apprenticeship or a university degree in one of many engineering fields such as aeronautical, automotive, manufacturing, electronic, civil or mechanical engineering.

Contact: Mr Cooper





Further Additional Science AQA (Single Award) Grades A* - G AQA (4410)

In Dual award Science (Science A and Additional Science) in total a pupil gains 2/3 of a GCSE in Biology, Chemistry and Physics. This course “tops up” these to the equivalent of a whole GCSE in Biology, Chemistry and Physics. Pupils who opt for this course should be expecting to gain an A or A* for Science GCSEs and it would mean that Science would take up 30% of the pupil’s entire timetable. This course combined with Science A and additional Science is similar to triple Sciences.

GCSE Further Additional Science enables students to improve their skills, knowledge and understanding of 'How Science Works' in relation to the living, material and physical worlds.

The three sciences Biology, Chemistry and Physics are taught separately using Unit 3 modules from the individual subject GCSEs. The units covered are :-

- Biology 3a : Transport systems in plants and animals, .
- Biology 3b: Homeostasis, Humans and their environment.
- Chemistry 3a: The periodic table, water and energy change calculations.
- Chemistry 3b: Quantitative Chemistry, ammonia and simple organic Chemistry.
- Physics 3a: Medical applications and how Physics works.
- Physics 3b: Keeping things moving..

Assessment

Further additional Science is assessed in a similar way to Science A and Additional Science. Biology 3, Chemistry 3 and Physics 3 are assessed in 3 x 1 hour exams which contribute 25% each to the total mark. The final 25% is assessed by coursework (Investigative Skills assessment) which is made up of two written assessments and several lessons for practical work and data processing.

FAQs

Is Further Additional Science the same as triple Science?

Further additional is not exactly the same as triple Science. Exactly the same content of work is covered but examined in a slightly different way. Most employers and sixth form colleges accept it as equivalent.

Does my child have to take Further additional Science in order to be a doctor, vet,, engineer or Scientist.?

No! Double award Science is perfectly adequate to go on and take Science A levels and progress to any of these university courses and others.

Contact: Mr A Glencross (ag@sjs.ac.cy)